

Parts list

 faucet x1	 hot-cold waterlines x2
 upper part drain x1	 bottom part drain x1
 plastic washer x2	 Mounting Ring x1
 O-ring x1	 U-metal piece x1
 screw x2	 U-Rubber pad x1
 PTFE tape x1	 basin x1
 adapter 1/2 to 3/8 x 2	 adapter 1/2 to 9/16 x 2



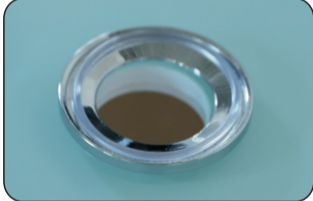
Sink installation instruction



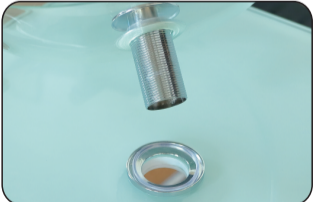
Prepare the required accessories



Pass the top part of drain through the drain hole



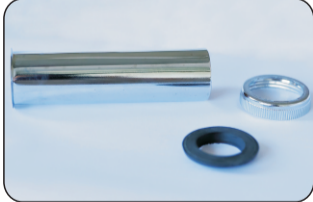
Put the mounting Ring on the countertop (with plastic washer)



Align the sink with the drain hole and set it up (Thread seal tape five or six laps)



Put the rubber washer on the drain pipe and tighten the nut (under countertop)



Prepare bottom parts of drain



Contact two parts of the drain and tighten



Finished



The overall effect

Faucet installation instruction



contact hot-cold waterlines and tighten



Put O-ring to the position as shown



Drill the 1/4 screw in



Pass two waterlines through faucet hole of countertop & adjust faucet



Put U-rubber pad on



Put U-metal piece on



Put nuts on & tighten nuts



Finished



The overall effect